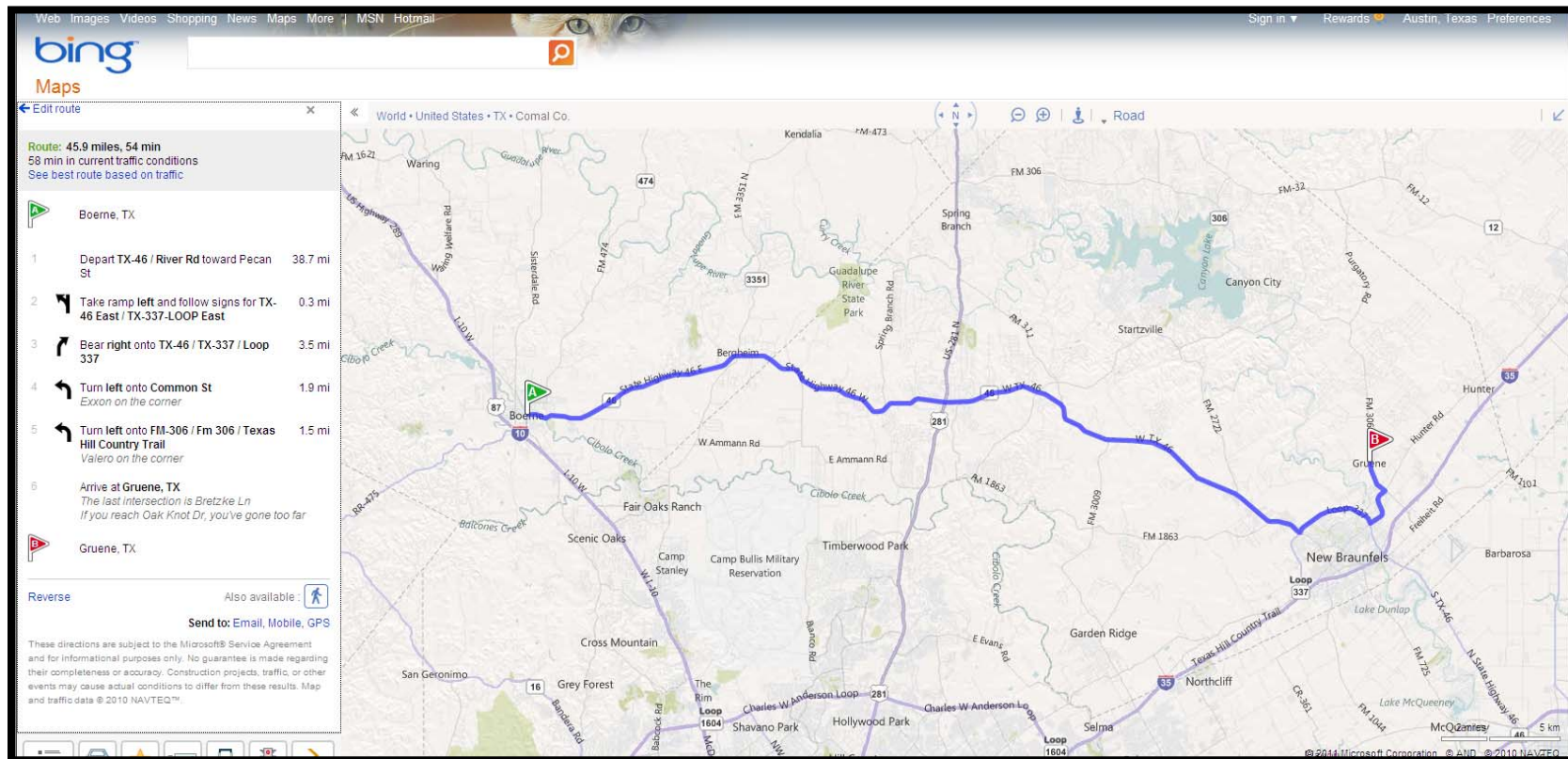


George Strait Honky-tonk Tour (March 2012)

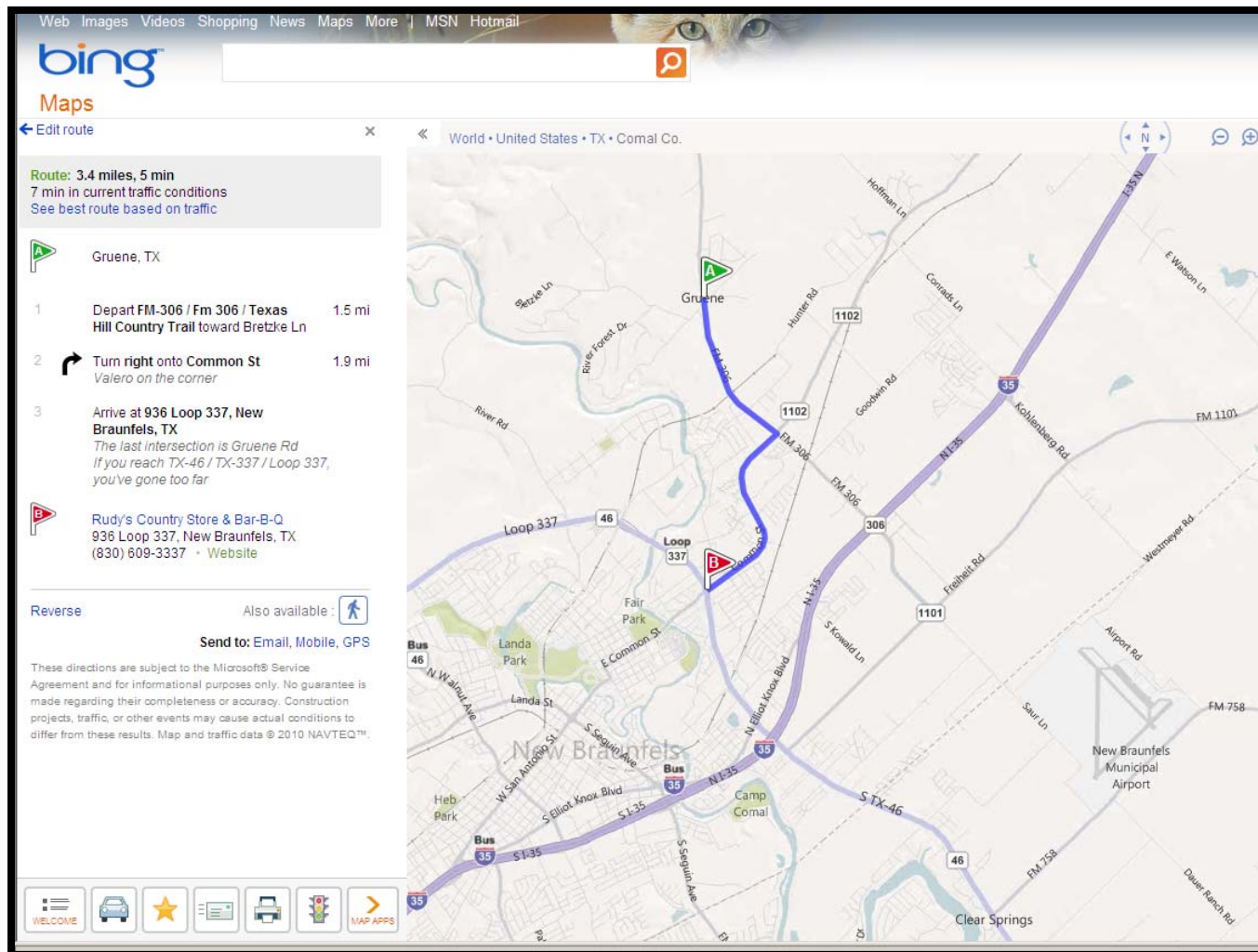
(For this tour allow at least 5-6 hours; so that you can see the displays, take photos, eat lunch or dinner.

Allow additional time if you stay for the music at Gruene Hall or Cheatham Street Warehouse)

From Boerne to **Gruene Hall** (Gruene). (45.9 miles approximately 1 hour) (830) 606-1281 - 1281 Gruene Rd. Open hours: 11AM-11PM (music starts at various times; Saturday nights at 9PM; cover charge \$5-\$25/per person) Gruene Hall has live music 7 nights a week, as well as Saturday and Sunday afternoons. Most Friday and Saturday nights require a cover charge or advance ticket purchase, while the rest of the time live music is offered at no charge to the public. Check calendar at <http://gruenehall.com/>. George Strait display is inside on the wall. On the street outside of Gruene Hall was the site of the photo shoot for the *Twang* album. (Grist Mill restaurant is next door. If the weather is warm, sit outside overlooking the river. If the weather is cool, sit inside next to the fireplace.)

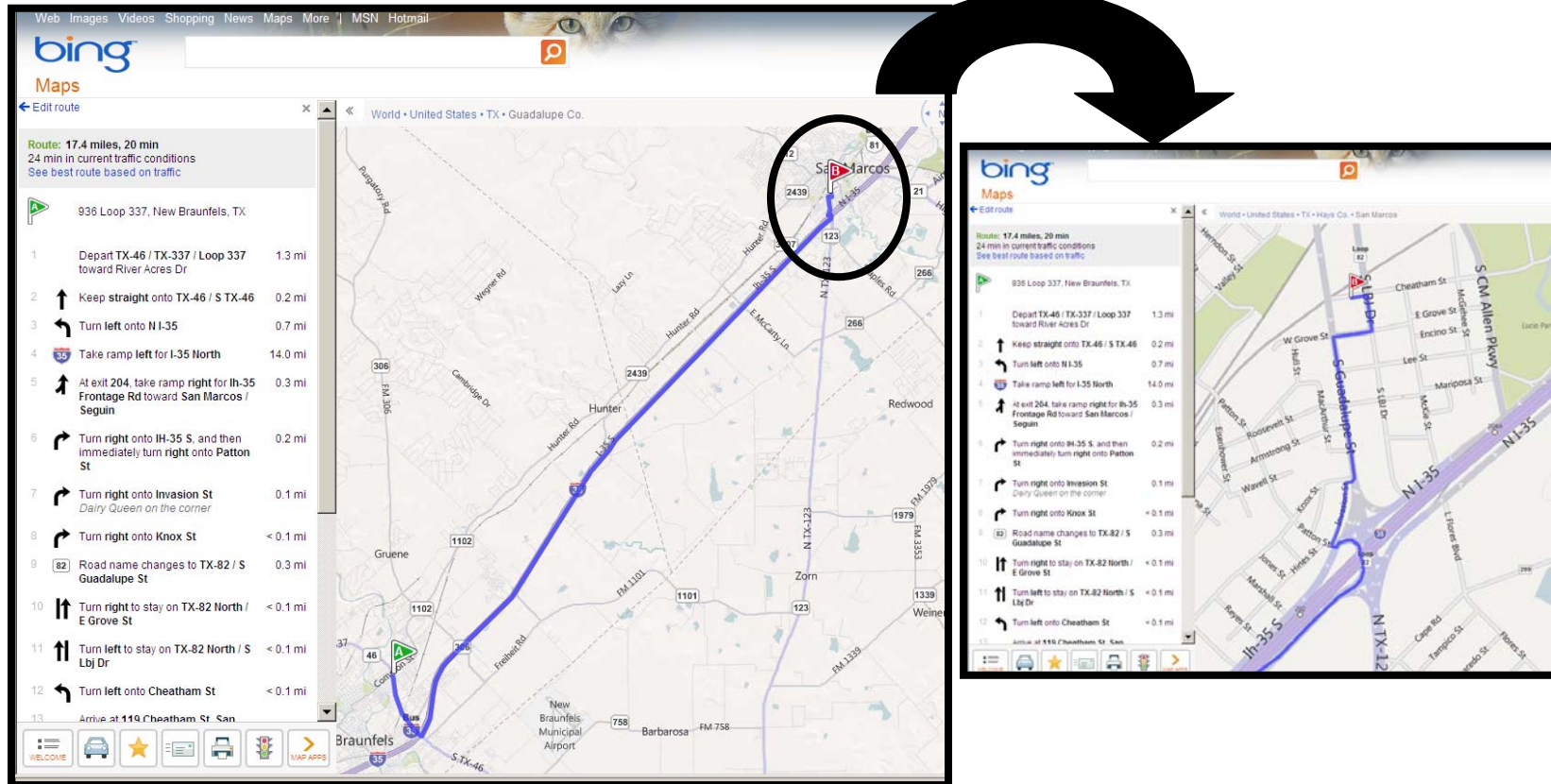


Former **Crystal Chandelier** (present day **Rudy's Country Store and Barbecue**) (New Braunfels) (3.5 miles, about 10 minutes) (830) 609-3337. Hours Sun-Thurs: 7AM-9:30PM; Fri-Sat: 7AM-10PM. Lots of George Strait/Ace in the Hole memorabilia from the Crystal Chandelier days. **Ladies: Be sure to go to the Ladies restroom!!** (Great BBQ. Try the Cream Corn; fabulous! You'll never think of eating canned cream corn again!)



Cheatham Street Warehouse (San Marcos) – (17.4 miles, about 30 minutes) (512) 353-3777

119 Cheatham Street (next to the railroad tracks) Open hours: 3PM – 1AM (music starts at 8PM; cover charge \$5-\$10/per person) Check calendar at <http://www.cheathamstreet.com/calendar.html>. George Strait display inside. This is the place where the Ace in the Hole got its start.



Allow about 2-3 hours to get back to Boerne; considering heavy traffic on weekdays (between 4:30-6:30)